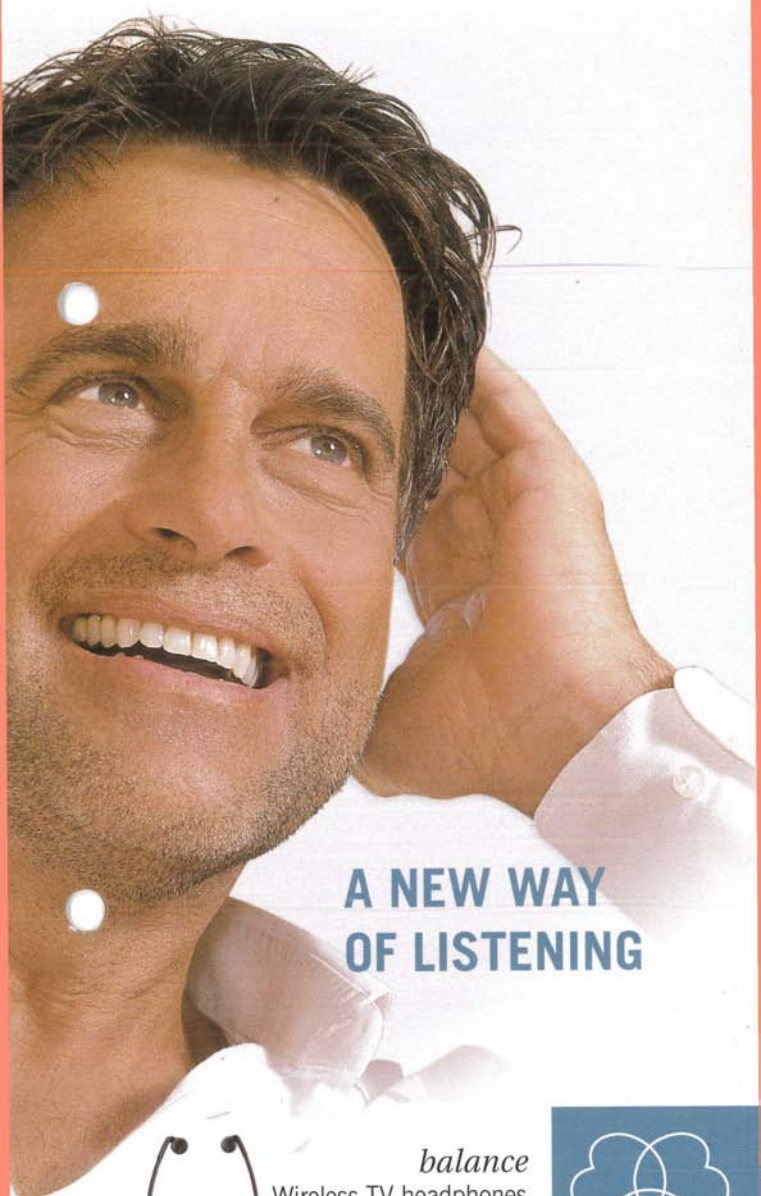


# AKG ACOUSTICS



## A NEW WAY OF LISTENING



*balance*  
Wireless TV headphones  
for relaxed listening



*Loud and soft are highly  
subjective terms.*

This is why TV often causes quarrels among friends or within the family. What sounds soft to one person may be too loud for the next.

Of course, everybody should get all the dialog but turning up the volume does not necessarily mean the dialog becomes any clearer and certainly won't create a pleasant, relaxed mood.

Sounds like a familiar situation?  
How does it come about?

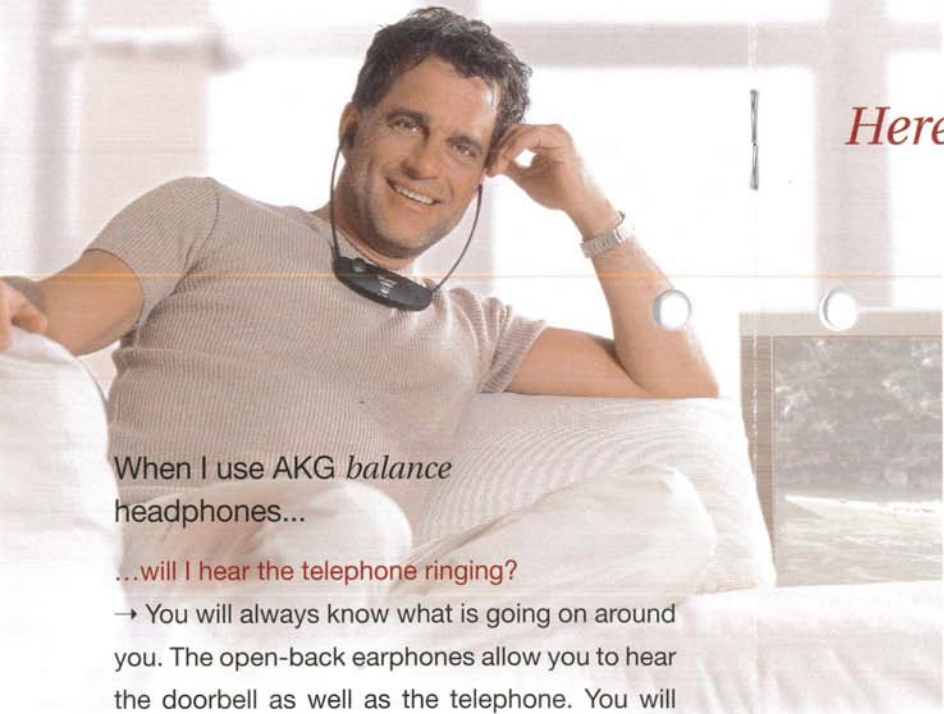
For one thing, everybody perceives sound differently, and your left ear may be more sensitive than your right ear. This means that sometimes it would be better if the sound were a little louder at one ear than it is at the other.

For another, most headphones are designed for music reproduction. If you just turn up the volume of your TV set, the ambience of a movie including the music becomes louder too, while you won't hear the actors' voices any better.

! The comfortable wireless TV headphones from AKG have been specifically optimized for speech reproduction and provide a balance control for setting the left and right volume levels as desired, adding to the fun and drama of watching TV.

Wondering how  
that works?  
Read on.





When I use AKG *balance* headphones...

**...will I hear the telephone ringing?**

→ You will always know what is going on around you. The open-back earphones allow you to hear the doorbell as well as the telephone. You will never feel isolated from the world around you.

**...can others watch TV at the same time?**

→ Of course, other persons can watch TV at any desired volume setting without using *balance* headphones, or you can mute the TV set.

**...will music sound good too?**

→ The acoustic design of the AKG *balance* headphones provides both optimum intelligibility of speech and excellent music reproduction.

## Here's how it works.

AKG *balance* headphones are very easy to use. Each *balance* set comprises a transmitter and a receiver. These are needed to set up the wireless transmission link:

- ① Connect the transmitter to your TV set or hi-fi system as you would any hard-wire headphone.
- ② The receiver is integrated in the headphones.
- ③ Put the headphones on and enjoy, make yourself comfortable, and forget about cables.

**!** The headphones will power up automatically as you put them on and switch off automatically as you take them off, saving energy and prolonging battery life.

**!** The headphones provide a **balance control**. Set the balance between the left and right channel volumes as desired and enjoy your favorite music or TV program.



**!** The speech-optimized speakers emphasize dialog so you can enjoy watching TV without being distracted by the movie's ambience.

**!** The headphones have been designed for comfortable wearing even in a reclined position. They are extremely light and will not interfere with your individual hairstyle. *balance* headphones are ideal for wearers of eyeglasses too, because there is no headband that could get into the way of the eyeglasses.

AKG *balance* headphones are available in infrared and RF versions.

## Infrared



Wire-  
less!

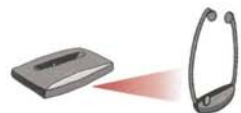
*balance*  
k 122 ir

## RF



Wire-  
less!

*balance*  
k 216 afc



**Infrared** The *balance k 122 ir* infrared model requires a direct line of sight between the transmitter and receiver. The signals are transmitted by infrared waves and the system provides mobility and interference-free reception anywhere within view of the transmitter.



**RF** The *balance k 216 afc* uses an even more convenient radio (RF) transmission link. Tuning the receiver optimally to the transmitter frequency is as easy as pushing a button. Radio signals will pass through walls and ceilings, so you can move about freely in your home or garden without losing the signal.



## Unique features.



**Balance control:** Sets the balance between the left and right channel volumes.



**Automatic on/off switch:** The headphones will switch on automatically as you put them on, and off automatically as you take them off, saving energy and prolonging battery life.



**Optimum user comfort:** Designed for comfortable wearing even in a reclined position, light, ideal for users wearing eyeglasses. No interference with your hairstyle.

**Open-back earphones** ensure fatigue-free listening and allow you to hear ambient sounds (e.g., the telephone), too.



**Optimized for intelligibility of speech and accurate music reproduction.**

**Non-stop listening:** Each headphone system comes with two high quality NiMH rechargeable batteries for approx. four hours (RF system) or five hours (Infrared system) of continuous operation. You can charge one battery while using the other. The transmitter can quick-charge (within approx. four hours) up to three batteries simultaneously. The batteries have no memory effect so there is no need to discharge them before recharging to maintain their capacity. No risk of overcharging.



Infrared RF



**Ear pads:** Replaceable and easy to clean. Two soft and two harder ear pads included.



**RCA to SCART adapter:** You can connect the transmitter to a headphone jack, RCA line outputs, or to a SCART connector on the TV set rear panel using the RCA/SCART adapter.



**The transmitter can be used with several headphones at once.**



**3 in 1** transmitter design integrates battery charger and storage cradle for headphones.

Wireless!

**AKG balance k 122 ir only:**

**Infrared signal transmission** for mobility and reliable reception as long as there is a direct line of sight between transmitter and receiver.

Suited for rooms up to 700 sq.ft. (65 m<sup>2</sup>), max. range is approx. 43 ft. (13 m).



**Dual-channel** selector for language selection (L/R) on bilingual programs or stereo mode.

Wireless!

**AKG balance K 216 afc only:**

**RF signal transmission:** Total mobility and reliable reception through walls and ceilings. Max. range (free-field) is 330 feet (100 m).

**Autotuning feature:** Automatic tuning to transmission frequency for optimum reception at the push of a button.



## Specifications

### balance k 122 ir

Speakers	dynamic	Battery life	~ 5 hours (NiMH rechargeable battery <sup>1</sup> )
Design	open	Range	~ 13 m (65 m <sup>2</sup> ) ~ 43 ft. (700 sq.ft.)
Max. sound pressure level	115 dB SPL	THD (electrical)	< 2 %
Carrier frequency	2.3 / 2.8 MHz	Weight (headphones)	60 g (2.1 oz.)
Audio bandwidth	30 to 18,000 Hz	Weight (transmitter)	156 g (5.5 oz.)

### balance k 216 afc

Speakers	dynamic	Battery life	~ 4 hours (NiMH rechargeable battery)
Design	open	Range	~ 100 m (330 ft.) <sup>*</sup>
Max. sound pressure level	115 dB SPL	THD (electrical)	< 2 %
Carrier frequency	864 MHz	Weight (headphones)	58 g (2 oz.)
Audio bandwidth	30 to 18,000 Hz	Weight (transmitter)	179 g (6.3 oz.)

<sup>\*</sup>Under ideal transmission conditions (free-field).



www.akg.com

**H** A Harman International Company



Microphones · Headphones · Wireless Microphones · Wireless Headphones · Headsets · Electroacoustical Components

**AKG Acoustics GmbH**

Lemböckgasse 21–25, P.O.B. 158, A-1230 Vienna/AUSTRIA, Tel: (+43 1) 86 654-0\*, Fax: (+43 1) 86 654-7516,  
www.akg.com, e-mail: sales@akg.com, Hotline: (+43 676) 83200 888, hotline@akg.com

**H** A Harman International Company

**AKG Acoustics GmbH**

Bodenseestraße 228, D-81243 München/GERMANY, Tel: (+49 89) 87 16-0, Fax: (+49 89) 87 16-200,  
www.akg.com/de, e-mail: infode@akg.com, Hotline: (+49 89) 87 16-22 50, hotlinede@akg.com

**AKG ACOUSTICS, U.S.**

914 Airpark Center Drive, Nashville, TN 37217, U.S.A., Tel: (+1 615) 620-3800, Fax: (+1 615) 620-3875,  
www.akgusa.com, e-mail: akgusa@harman.com

For other products and distributors worldwide see our website: [www.akg.com](http://www.akg.com)

